



***Working in  
partnership  
with Stirling  
Council &  
local  
landowners***

# Why we started off

- State of local paths and community interest in forming a separate volunteer group
- Our surveys in 2014-15 showed:
  - Poor signing
  - Many wet sections
  - Clearance needed on some paths
  - Minimal indication of any maintenance.



# How we work

The team focusses on maintaining & improving footpaths in and around Dunblane including the Laighills. The main activities of the team are

- ▣ Clearance of undergrowth, overgrowth and fallen branches.
- ▣ Upgrading wet and flooded path sections by improving drainage, laying stone slabs or spreading stony infill materials.
- ▣ Installing waymark posts to properly mark path routes.

With a pool of 12 volunteers, we currently stick to simple jobs, using our own hand tools

Working party timings are arranged to fit in with volunteer availability and weather; on average once a fortnight

Laighills Paths

Kippendavie Woods

Rylands Burn Path

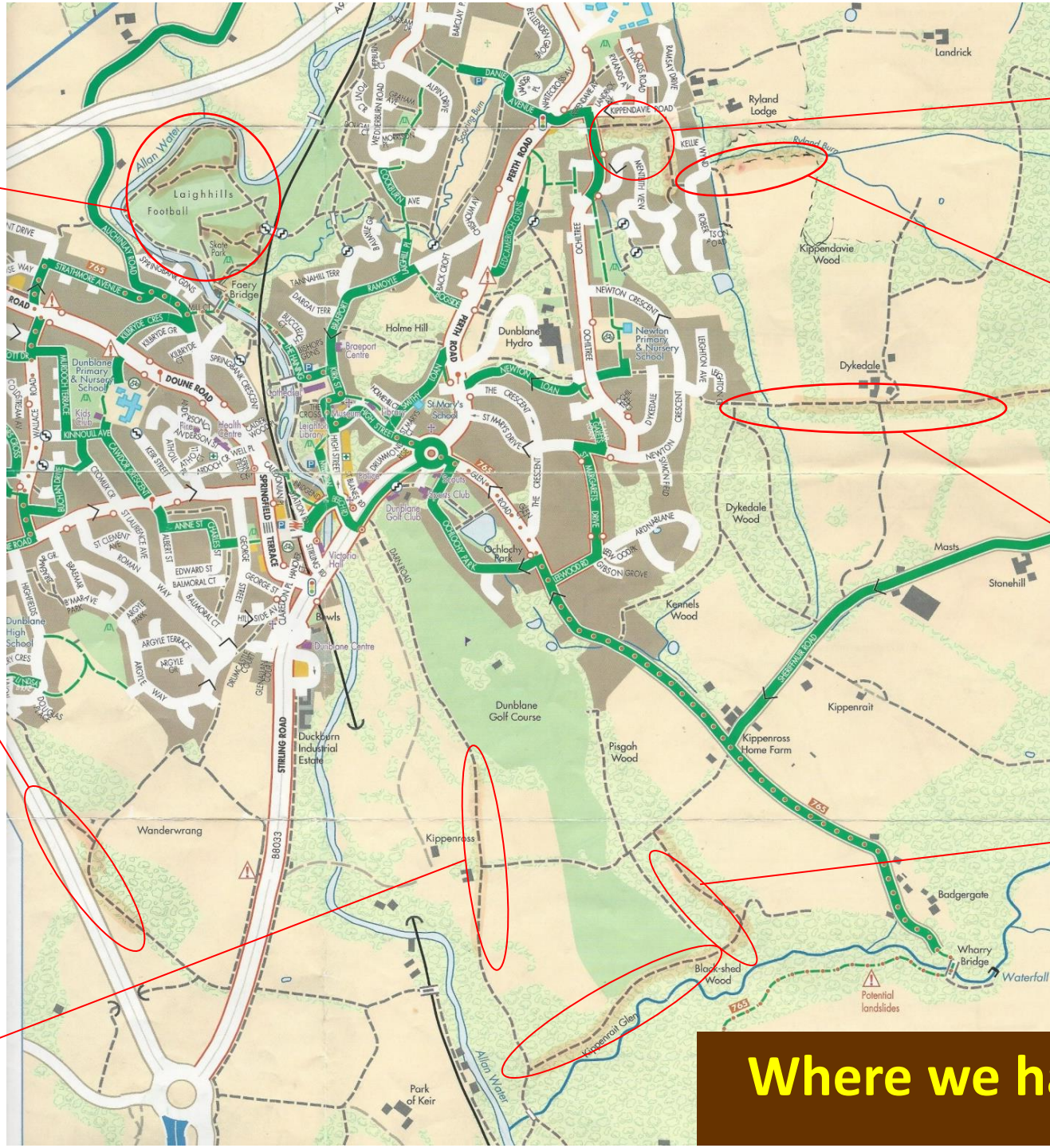
Dykedale / Sherrifmuir Path

Baxters Loan

Firs Path

Darn Path

Where we have been



# Summary of 2019 Activity

- ▣ A pool of 12 volunteers.
- ▣ 21 working parties since Sept 2018
- ▣ Average turn out is 5 people. Varies from 3 to 8.
- ▣ People hours worked over period = c180
- ▣ 9 Paths worked on:

- Riverside path at Kinbuck
- Memorial Gardens riverside paths
- Woods around Kellie Wynd
- From B8033 towards Wanderwrang cottage

- Laighills
- Ashfield path
- Dykedale Wood
- Darn Road path
- Golf Course to Glen Rd.

## **Kinbuck Riverside path**

**Reinstatement and improvement of path that had become unusable**



## **Laighills paths**

**Lots of clearance work due to rapid growth rate this summer.**



## Ashfield Path

Summer clearance  
– mainly at Ashfield end.

## Dykedale Wood

Clearance on Loop Core  
Path – mainly Gorse





## Baxters Loan 2017-18

Improving Drainage  
& Stone Walkway Building

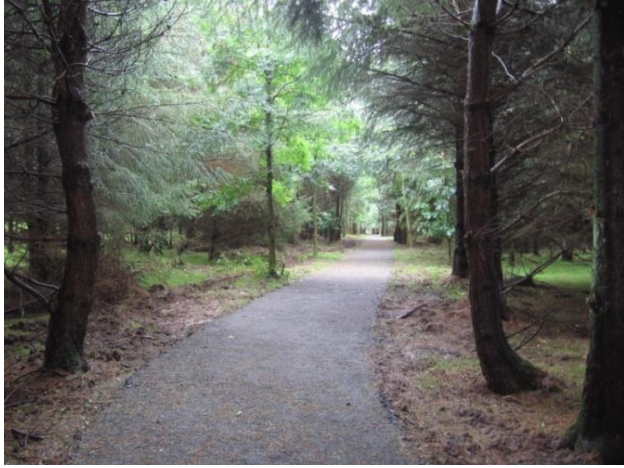


## Memorial Gardens Riverside Paths 2019



Clearance Of Overhanging Vegetation





## ***NOT the DDT!***

### ***Kippendavie Estate***

We work in partnership with local landowners who are achieving real gain for Dunblane walkers.

In recent years the path from Newton Crescent to Sherrimuir, the Macrae monument and the Gathering Stone have been professionally improved.

In 2019 they have added paths near Kellie Wynd and Landrick Farm.

These now have a rolled stone surface with good drainage and comfortable for walking on even during extended wet weather periods. There are plans to extend this upgrading of paths in the area.

Try them out for yourself sometime.



# Direction 2019/20

- ❑ Clearance work will continue to be our main activity.
- ❑ There are still some wet/boggy areas on a few paths which can be improved. Starting this autumn on the Ashfield to Kinbuck path.

**For further information on how you can help with this group:**

***DDT Office:*** 01786 822422 and leave a message

***John Newman:*** 01786 825682

***Email:*** : [info@dunblanedevdevelopmenttrust.com](mailto:info@dunblanedevdevelopmenttrust.com)